

Orlando Repertory Theatre is now

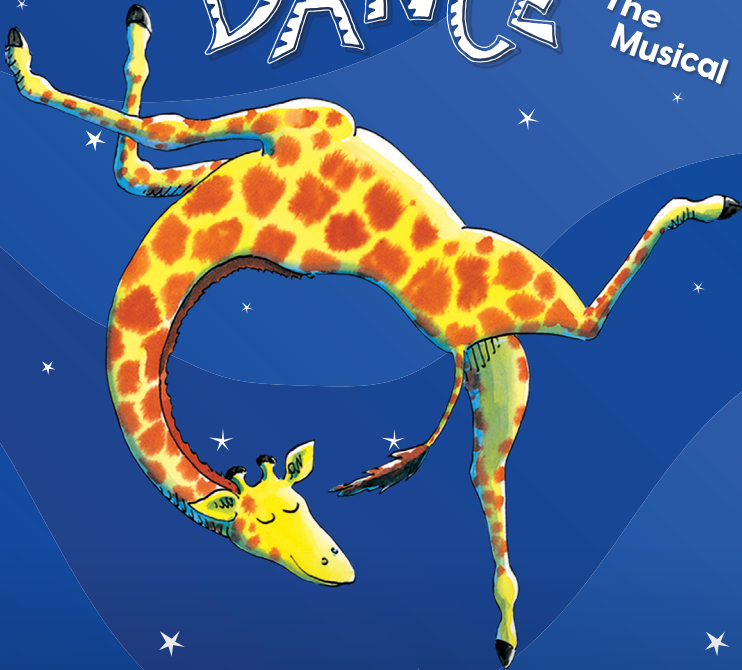


**ORLANDO
FAMILY
STAGE**

IN PARTNERSHIP WITH UCF

GIRAFFES CAN'T DANCE

The
Musical



January 29 - February 25

BOOK & LYRICS BY **Gloria Bond Clunie**

MUSIC BY **Elton Bradman & Leela Oleszkiewicz**

BASED ON THE BOOK BY **Giles Andreae & Guy Parker-Rees**

Based on the book by Giles Andreae and Guy Parker-Rees. Published by Hachette Children's Group. Text © Purple Enterprises Limited, a Coalabi Group Company.



23/24

Season Lineup

Founded in 1926, Orlando Family Stage is the eighth iteration of the original theatre company and has operated for over 20 years as Florida's only professional theatre for young audiences. Orlando Family Stage changed its name on June 15, 2023, and was most recently known as Orlando Repertory Theatre (or Orlando REP).

Disney's Descendants: The Musical

A Youth Academy Production
July 14 – 23, 2023

TheatreWorks USA's

The Magic School Bus:

Lost in the Solar System

September 5 – October 8, 2023

Theatre for the Very Young:

Dinosaur Dance Party

September 9 – October 1, 2023

Click, Clack, BOO! A Tricky Treat

October 2 – 31, 2023

Teen Perspectives Lab: #ENOUGH

A Youth Academy Production
November 6, 2023

Junie B. in Jingle Bells, Batman Smells!

November 13 – December 23, 2023

Disney's Finding Nemo Jr.

A Youth Academy Production
December 8 – 10, 2023

Pip-Squeak: An Anti-Bullying Magic Show

January 9 – 12, 2024

TheatreWorks USA's

Charlotte's Web

January 19 – 23, 2024

Giraffes Can't Dance, The Musical

January 29 – February 25, 2024

Theatre for the Very Young

Yo, Ho, Ho! Let's Go!

March 2 – 24, 2024

Allie Kazan and the Magic Mansion

March 4 – 31, 2024

The Lightning Thief: The Percy Jackson Musical

April 2 – May 7, 2024

Schoolhouse Rock Live! Jr.

A Youth Academy Production
April 26 – 28



Scan to learn more
about shows, memberships,
classes, and more, or visit
orlandofamilystage.com.

Artistic Director: Jeffrey M. Revels
Executive Director: Chris Brown

CREATIVE TEAM

Director: Ke'Lee Pernel
Choreographer: Myles Thoroughgood
Music Director: Bert Rodriguez
Associate Director: Shonda Tapia
Scenic Designer: Tramaine Berryhill
Costume Designer: Evonne Nicole
Lighting Designer: George Jackson
Sound Designer: Anthony Narciso**
Props Designer: Tara Kromer
Assistant Scenic Designer: David Jackson

PRODUCTION CREW

Stage Manager: Shannon Motherwell
Assistant Stage Manager: Julia Hammond
Scenic Charge Artist: Sarah Bender Allen
Costume Technicians: Wendy Cox,
Kathia Rodriguez
Wig Technician: Carmen Medina
Props Build Crew: Reme Alias
Electricians: Matthew Alexander, Jonathan
Leppert, Zach Smith, Kennen Wedge
Lighting Programmer: Stevie Bleich

RUN CREW

Light Board Operator:
Matthew Alexander
Sound Board Operator:
Kenneth Conley, Jr.
Backstage Run Crew:
Ericka Rivera-Brown
Wardrobe Crew: Corina Brown
Spot Light Operators: Brent Jordan,
Jared-Austin Roys



** denotes a member of United Scenic Artists Local 829.

SPECIAL THANKS

Michael Cairns Photography

Orlando Family Stage Staff

Executive Director

Chris Brown

Artistic Director

Jeffrey M. Revels

ADMINISTRATIVE

Sr. Creative Director of Brand and Marketing

Ashley Willsey

Sr. Director of Development

Emily Freeman

Sr. Director of Education

Jennifer Adams-Carrasquillo

Director of Arts-Based Learning

Stacie Perez

Director of the Youth Academy

Bryn Fussell

Education Program Manager

Shonda L. Tapia

Youth Academy Manager

Mike Sweezey

Accounting & Human Resources Manager

Drew Simonsen

Social Media Manager

Bailey Hill

Development Coordinator

Melissa Maldonado

PRODUCTION

Sr. Director of Production

Carrie Kasten Smith

Company Manager

Calli Charlton-Moore

Director of Production and Scenery

Kyle Wiehe

Scenic Manager

Rachel Lann

Scene Shop Coordinator

Chris Conte

Props Manager

Tara Kromer

Director of MicheLee Puppets

Nic Parks

Director of Production Technology

Justin Harmon

Production Technology Manager

Stephen Jones

Costume Shop Manager

Alexandria Vazquez Myers

Costume Shop Coordinator

Mary Sienko

FRONT OF HOUSE

Sr. Director of Operations

Benjamin Fortin

Front of House Manager

Ximena Gonzalez

Patrons Services Manager

Natazsa Roby-Smith

Group Sales Manager

Cerise Sweezey

Facility Manager

Brian Groth



Joy Allen
Elephant



Julian Brown
Djembe Drummer



Dayla Carroll
Zebra



Jordan Sophia
Lion



Evelyn Jackson
The Moon/Swing



Esther Olivo
Swing



Adourin Jamelle Owens
Cricket



Gabriel Ramos
Gerald



Katy Williams
Monkey

Song List

I Am Gerald - The Moon	The Moon
Shine, Moon, Shine	Gerald, Cricket, Elephant, Ensemble
When The World Comes To Dance	Gerald, Cricket, Elephant, Ensemble
I Am Gerald	Gerald
Giraffes Can't Dance	Lion, Monkey, Zebra
When The World Comes To Dance (Reprise)	Gerald, Cricket, Elephant, Ensemble
Greetings! Dumela! Hola! Namaste! Ni Hao! Bonjour!	Cricket, Elephant, Ensemble
Be Kind	Cricket, Gerald
I Am Gerald (Reprise)	Gerald
The World Loves To Dance!	Elephant, Cricket, Ensemble
Djembe	Elephant, Cricket, Ensemble
I Can Dance - Wiggle! Hop! Don't Stop!	Gerald, Cricket, Elephant
Friends	Gerald, Cricket
Shine, Moon, Shine (Reprise)	Gerald
Hello	Elephant, Cricket, Ensemble
Welcome Ceremony	Elephant, Cricket, Ensemble
A Different Song	Cricket
I Can Dance	Gerald
Different Song/Finding My Song	Gerald, Ensemble
I Can Dance/Can't Stop Dancing	Gerald, Cricket, Elephant, Ensemble
Can't Stop Dancing/Giraffes Can Dance!	Gerald, Cricket, Elephant, Ensemble

Joy Allen | Elephant

Joy is stoked to be making her Orlando Family Stage debut! Some recent credits include: *The Prom* (Teen Ensemble, u/s Emma), *Disney's Descendants* (Jay), *Disney's Camp Rock* (Shane), and *Sherlock Holmes and the First Baker Street Irregular* (Sherlock Holmes). Much love to family, friends, and puppies. Enjoy the show!

Julian Brown | Djembe Drummer

Julian is very excited to be a part of *Giraffes Can't Dance* at Orlando Family Stage. Julian graduated from Orange County Virtual School. He has played percussion throughout Florida, as well as the southern states. He thanks his family and friends for their continuous support and especially Orlando Family Stage for giving him the opportunity!

Dayla Carroll | Zebra

Dayla is excited and grateful to be back to jumpstart 2024 with this fun story at Orlando Family Stage. Actor credits Include: *Elf The Musical* (Shawanda the Elf/ Ensemble), *Dreamgirls* (Marty), *Mary Poppins* (Katie Nana/Ensemble), *Miracle in Bedford Falls* (Tilly/Female Swing) *The Polar Express Train Ride* (Hero Girl), and more. Dayla thanks everyone here at Orlando Family Stage for this opportunity, as we all continue to support the arts. Follow Dayla's journey on Instagram @_dayla_sings_

Evelyn Jackson | The Moon/Swing

Evelyn is making her Orlando Family Stage debut in *Giraffes Can't Dance*. Previous credits include: Dorothy in *The Wiz*, the Laker girl in *Legally Blonde*, and last but not least, The Queen in *Once Upon a Mattress*. Evelyn is looking forward to people enjoying the positive message of *Giraffes Can't Dance*!

Adourin Jamelle Owens | Cricket

Adourin, a Sanford native, is extremely excited to be making his debut with the Orlando Family Stage as Cricket! Some of his most recent roles have been Renfield in *Dracula* (Opera Del Sol & CityArts) and Doody in *Grease* (The Ritz). Adourin has a huge passion for the arts and looks forward to being able to encourage young individuals while using his gifts! Some of his next projects will be *Five Guys Named Moe* (The Winter Park Playhouse), and *The Color Purple* (SparkyL Entertainment performing at the Dr. Phillips Center). Adourin thanks his loving wife and family for their love and support, and you for coming to the show! Enjoy!

Esther Olivo | Swing

Jambo! Hello! Jambo! Esther is so excited to be back at Orlando Family Stage for this production! She received her BFA in Musical Theatre from Jacksonville University. Some of her previous credits include: Esmeralda (*Hunchback of Notre Dame*), Kiki (*Significant Other*), Lupita (*Luchadora*), Aida (*Aida*), Allie (*Mamma Mia!*) and The Narrator (*Joseph and the Amazing Technicolor Dreamcoat*). Esther is beyond grateful to be part of such a fun show with such a passionate and diversely talented cast and creative team! She

hopes you enjoy the show and have even more fun dancing!

Gabriel Ramos | Gerald

Gabriel is thrilled to make their debut at the Orlando Family Stage as Gerald the giraffe. Other performance credits include: Mark Anthony in *A Chorus Line*; Eurydice in *Eurydice*; Tweedle Dee, Rat Tapper, Duloc Dancer and u/s Papa Bear in *Shrek The Musical* at Orlando International Fringe Theatre Festival (2021, 2022, and 2023) and *Universal Orlando Holiday Parade* (2021, 2022, and 2023). Gabriel, born and raised in Brazil, is proud to use their voice and body to tell stories and make magic happen on stage. Let's dance! Instagram: @xgabrielramos

Jordan Sophia | Lion

Jordan is so excited to be making her Orlando Family Stage debut! Previous credits include: *Beauty and the Beast* (Belle), *Young Frankenstein* (Inga), and *The SpongeBob Musical* (Sandy). You can also find Jordan leading the giraffe section in another Prideland in *Festival of the Lion King* and *The Hoop Dee Doo Revue*. She thanks her family and friends for their continued love and patience, as well as Ke'Lee, Shonda and the rest of the team for creating such a richly diverse environment full of joy and creativity. It has been such a pleasure bringing this show to life! Soli Deo Gloria IG: @jordansophia123

Katy Williams | Monkey

Katy is jazzed to be making her Orlando Family Stage debut! She has recently been seen in *Capone's Dinner and Show* (Ms. Jewel), *The Little Mermaid* (Arista), *Cruel Intentions* (Mrs. Caldwell) and *Sordid Lives* (Bitsy Mae), as well as performing on stilts all over Orlando. Thanks for watching!

.....

Gloria Bond Clunie | Book & Lyrics

Gloria Bond Clunie is an award-winning playwright, educator, and director. She is a founding member of the Playwriting Ensemble at Chicago's Regional Tony Award-winning Victory Gardens Theater where her plays *North Star*, *Living Green*, and *Shoes* premiered and the founding Artistic Director of Evanston's Fleetwood-Jourdain Theatre. Other works by this Northwestern University graduate (B.A. Theater, MFA-Directing) include *Sweet Water Taste*, *Smoke*, *Blu*, *Quark*, *Buck Naked*, *Bankruptcy*, *My Wonderful Birthday Suit*, *The Last Stop on Market Street*, and *A Shot #Lovestories Inspired by Black Lives Matter*. Theaters presenting her work include The Goodman, Horizon Theatre Company, Triad Stage, American Blues Theatre, Chicago Children's Theater, Children's Theater of Charlotte, Dallas Children's Theatre, and Orlando Shakespeare Theatre. This Dramatist Guild Fellow has numerous awards, including a Chicago Jeff, Theodore Ward African-American Playwriting Prizes, NEA and Illinois Arts Council Fellowships, and the Evanston Mayor's Award for the Arts. Currently, she is thrilled both *Tall Enough* (Chicago Playworks, The Theatre School, DePaul University)

and *Giraffes Can't Dance, The Musical* (Rose Theatre, Omaha) premiered this April, *Last Stop on Market Street* was just at First Stage in Milwaukee, and her adaptation of *The Hula Hoopin' Queen* premiered at Childsplay and Imagination Stage in 2023. Since Ms. Clunie has never had a play produced in the New York area, she considers herself an emerging playwright and looks forward to having her work introduced in significant East Coast theaters.

Everett Elton Bradman's | Music

Everett Elton Bradman's 2022-2023 composer/sound designer credits include *Twelfth Night* at the Oregon Shakespeare Festival, three premieres (*Lear* at Cal Shakes, *A Distinct Society* at Pioneer and TheatreWorks, and *Mindplay* at the Geffen Playhouse), six productions for Oakland Theater Project, as well as shows at the Pasadena Playhouse, Z Space, South Coast Rep, UC Riverside, Pioneer, and Aurora. He is also a longtime music journalist, a Grammy-nominated bassist, and a music doula. Stop by and say hello at eltonsounds.com!

Leela Oleszkiewicz | Music

Composer, songwriter, and vocalist Leela Oleszkiewicz has been a performer since the age of five. Her work as a vocalist has ranged from classical art songs, Polish folk music, and '70s singer-songwriter jams. She is half of synth-pop duo Basetla, who released their debut album *Woman on The Run* in 2021. Leela has contributed her piano, composition, and vocal arranging/editing skills to a wide range of theater projects, including *Twelfth Night* (the Oregon Shakespeare Festival), *Red Oleanders* (UC Riverside), *Pride & Prejudice* (Shakespeare Santa Cruz), *Gather 'Round* (Saint Mary's College of California), *Ti-Jean & His Brothers* (ACT), *How to Transcend a Happy Marriage* (Custom MadeTheatre), and *Wives* (Aurora Theater). Besides also having worked in film (the documentary *A Place to Breathe*), HBO's *The Anarchists*, and musicals (*Covid: The Musical*), she was the composer for South Coast Rep's 2022 production of *Greg Banks' Snow White*.

Matthew Alexander | Light Board Operator

Matthew is happy to be back at Orlando Family Stage for another production. He is thankful for the opportunity to work with this team, making more wonderful memories along the way.

Sarah Bender Allen | Scenic Charge Artist

Sarah is an Orlando native with a BFA in Studio Art from Florida State University. She began working in theater in 2017 as a volunteer scenic painter for Central Florida Community Arts and the Props Intern at Orlando Family Stage. Since then, she has worked as a scenic charge, scenic designer, and prop designer for several Orlando theaters over the last six years. Most recently, she designed and painted the set for the Orlando Family Stage production of *Click, Clack, BOO! A Tricky Treat*. Sarah especially loves being able to share her work with her three sons, Keith, James, and William.

Tramaine Berryhill | Scenic Designer

Tramaine is a Miami native with over 15 years of experience creating live events. For the last 5 years, his design work has been in the meetings and corporate events industry. Recent professional theatre design credits include *A Raisin in the Sun* and *Godspell* at Garden Theatre and *Camp Omigosh*, *The Teddy Bears' Picnic*, and *Bob Marley's Three Little Birds* at Orlando Family Stage. "I think of set design as if I am building playhouses or adult jungle gyms for directors and actors to explore. It's been so much fun creating this design for *Giraffes Can't Dance*, I hope you enjoy the adventure!"

Corina Brown | Wardrobe Crew

Corina is stoked to say this is her fourth production with Orlando Family Stage! Previous shows include: *Disney's Finding Nemo Jr.*; *Make Way For Ducklings*; and *Click, Clack, BOO! A Tricky Treat*. She has worked in technical roles with several venues back in her home state of Michigan including Miller Auditorium, DeVos Performance Hall, and Van Andel Arena. She has also served in stage management, lighting, audio, and wardrobe positions for several community theatre productions in the Grand Rapids and Kalamazoo areas of Michigan. Most recently, she volunteered with the Orlando International Fringe Theatre Festival in May and she looks forward to further exploring the arts community in Orlando.

Kenneth Conley, Jr. | Sound Board Operator

Giraffes Can't Dance is Kenneth's third production with Orlando Family Stage.

Julia Hammond | Assistant Stage Manager

Julia is thrilled to be working with the Orlando Family Stage for the very first time on such a heartwarming production as *Giraffes Can't Dance*. She thanks the production team for providing such a welcoming environment. Most recent credits include: *The 25th Annual Putnam County Spelling Bee* (Stage Manager, 2024), *Spring Awakening* (Stage Manager, 2023), *The Prom* (Stage Manager, 2023), *Play In A Day* (Stage Manager, 2023), *Sweeney Todd: The Demon Barber of Fleet Street* (Assistant Stage Manager, 2023), *9 To 5 The Musical* (Assistant Stage Manager, 2023), and *Peter and the Starcatcher* (Assistant Stage Manager, 2023). Special thank you to her support system: her partner, Andrew, and her sister, Jess. IG: @julialhammond

Justin Harmon | Production Technology Manager

Justin started his live entertainment journey during his senior year at Charlotte High School in Punta Gorda, FL volunteering his time at the performing arts center. Justin moved to Orlando, FL in 2015 and graduated from Valencia College's Entertainment Design & Technology program in 2018. He continued at Valencia as a performing arts center staff member for another year before he went full time freelancing around Florida, working many concerts at multiple venues and music festivals. He is excited to be part of the Orlando Family Stage team. In his free time, Justin enjoys bowling and playing video games.

George Jackson | Lighting Designer

George is a freelance designer/programmer in Orlando and is happy to be returning to Orlando Family Stage to design *Giraffe's Can't Dance*. Recent designs include: *Million Dollar Quartet* and *Kinky Boots* at the Orlando Shakes, *The SpongeBob Musical* at Orlando Family Stage, *The Hunchback of Notre Dame* at Palm Beach Atlantic University, and *Baseball: A Musical Love Letter* at Opera Orlando. Some of the many companies he has worked for include: Walt Disney World, Universal Orlando, Orlando Magic, Norwegian Cruise Lines, Cirque du Soleil, and AEW Wrestling. George taught theatrical lighting at Valencia College and Palm Beach Atlantic University for several years and has an AS and AA Degree from Valencia College and a BA in Theatre from the University of Central Florida.

Stephen Jones | Production Technology Manager

Stephen is thrilled to be starting the year working with Orlando Family Stage full-time. In Orlando, Stephen previously served as Resident Sound Designer at the Renaissance Theatre Company from its opening until November 2022. Credits there include: *Nosferatu* (years 1 and 2), *La Medea*, and *Lenox Ave*. He also occasionally works with local group Phoenix Tears Production, for whom he directed their 2022 Orlando International Fringe Theatre Festival production and 2023 remount of *The Witches*, an original audio drama. Stephen got his start professionally in TYA, working as a sound designer, company actor, and teaching artist at the Arkansas Museum of Fine Arts Children's Theatre from 2016-2020. He is excited and thankful to have the opportunity to create theatre for young audiences once again.

Brent Jordan | Spot Light Operator

Brent currently calls Daytona his home, but is originally from Connecticut. Since moving to Florida, he found a passion for theater and acting. His most recent work on stage has been Arthur Brooks in *Boulevard of Bold Dreams*, Enrique/Daddy in *Locomotion*, Leland in *Blues for an Alabama Sky*, Paul in *Six Degrees of Separation*, Lenny in *Rumors*, and Martin Luther King, Jr. in *The Mountaintop*. Brent thanks his girlfriend and family for their support, and his fellow cast and crew for all the hard work that was done to put on this production.

Tara Kromer | Props Designer

Tara earned her MFA at UCF in 2015, where her research was focused on Directing and Sound Design. She holds a BA in Theatre from UNC Greensboro, and is a member of AEA and an associate member of SDC. Her work has taken her to venues including Orlando Shakes, Orlando Family Stage, Theater West End, UCF, Osceola Arts, The Ensemble Company at Penguin Point, Orlando International Fringe Theatre Festival, Seaside Music Theatre, Athens Theatre, and the Hippodrome (Florida); Steppenwolf, Congo Square, Chicago Shakes (Chicago, IL); New York Stage and Film, Potsdam Music Theatre, and the Hangar Theatre (New York). For Orlando Family Stage, Tara directed *Vote?*, *The Legend of Sleepy Hollow*, *Miracle in Bedford Falls*, *A Year With Frog and Toad*, *Polkadots: The Cool Kids Musical*, and *The Giver*. She has designed the props and

puppets for over 40 productions for Orlando Family Stage. www.tarakromer.com

Rachel Lann | Scenic Manager

Rachel graduated from Wright State University with a BFA in Theatre Design and Technology with a concentration in Technical Direction. She has previously worked for Great River Shakespeare Festival, Maltz Jupiter Theatre, and Bristol Valley Theater as a welder, master carpenter, assistant technical director, and technical director, and is excited to be a part of the team at Orlando Family Stage.

Shannon Motherwell | Stage Manager

Shannon is a 2022 graduate of UCF and frequently works as a teaching artist and stage manager at Orlando Family Stage. Previous OFS credits include: *Disney's Descendants The Musical* (Associate Director), *Locomotion* (Assistant Stage Manager), *Luchadora!* (Assistant Stage Manager), *Make Way For Ducklings* (Assistant Stage Manager), *Dinosaur Dance Party* (Stage Manager), *True North: A Magical New Holiday Musical* (Run Crew), and *Disney's High School Musical 2 Jr.* (Production Associate). She is the producer of the Kids Fringe Festival with Orlando International Fringe Theatre Festival and occasionally directs with Playwrights Round Table.

Alexandria Vazquez Myers | Costume Shop Manager

Alexandria is thrilled to be serving as the Costume Shop Manager at Orlando Family Stage! Born and raised in Orlando, Alexandria received her BA in Costume Design/Tech from Rollins College and her MFA in Costume Design/Tech from West Virginia University. Alexandria has designed productions at both educational institutions as well as in the community and professionally throughout the Eastern US, previously serving as the Costume Shop Manager/Resident Designer for the Florida Repertory Theatre. Recent design work includes: costumes for *The Legend of Sleepy Hollow* and guest designs at Rollins College and the Children's Theatre of Charlotte. She sends thanks to her husband and familia for their continuous support and looks forward to a fantastic season!

Anthony Narciso | Sound Designer**

Anthony is a Sound Designer and Composer based out of Orlando, FL. His work can currently be heard onboard several ships in the Norwegian Cruise Line family, at City Springs Theatre Company in the Atlanta, GA area, and here at Orlando Family Stage. Additionally, he is a guest artist for Auburn University's Department of Theatre, where he teaches and mentors sound students annually. Anthony previously served as Sound Designer for the Texas Shakespeare Festival from 2013-2018 and the season Sound Designer for Garden Theatre from 2020-2022. Anthony holds a Bachelor of Fine Arts in Theatre Design and Technology from the University of Central Florida and is a proud member of United Scenic Artists Local 829. Recent productions include: *Luchadora* and *Make Way for Ducklings* at Orlando Family Stage, *Fiddler on the Roof* and *White Christmas* at City Springs Theatre Company, and *Summer: The Donna Summer Musical* onboard the Norwegian Prima.

Evonne Nicole | Costume Designer

Evonne Nicole is a singer, songwriter, actor, playwright, director, and costume designer. Her most recent costume designs were featured in Orlando Family Stage's production of *Locomotion*. Evonne Nicole has performed multiple roles in productions throughout Central Florida, such as Marie (The Fairy Godmother) in *Rodgers + Hammerstein's Cinderella* and Cedella in *Bob Marley's Three Little Birds* at Orlando Family Stage. She has also played the role of *Celestina Warbeck* in *Diagon Alley* and currently plays Mabel in *The Blues Brothers Show* at Universal Orlando. Evonne Nicole is determined to make it to Broadway and the big screen one day, but in the meantime, she continues to hone her craft and maintain an active career in the arts and entertainment industry; all while being a wife, mother, and businesswoman.

Ke'Lee Pernell | Director

Ke'Lee is a musical theater instructor and vocal/acting coach based out of Orlando, FL. She majored in Vocal Performance at Wright State University (BA Music). Ke'Lee is certified in Early Childhood Music and Movement and has taught vocal/acting at various performing arts schools, as well as directed musical theater productions in the Orlando area since 2006. She has been the Director of Education for several performing arts schools, serves on the board of Go Full Steam, and currently runs Creative Arts From the Heart which offers mobile performing arts programs.

Jeffrey M. Revels | Artistic Director

Jeff has directed many productions at Orlando Family Stage (previously known as Orlando REP) including *Click, Clack, Boo! A Tricky Treat*; *The SpongeBob Musical*; *Pete The Cat*; *How I Became a Pirate*; *Junie B. Jones Is Not A Crook*; *Judy Moody & Stink: The Mad, Mad, Mad, Mad Treasure Hunt*; *The Best Christmas Pageant Ever: The Musical*; *Rock The Presidents*; *Harry Connick, Jr.'s The Happy Elf*; and *Orphie and the Book of Heroes*. He directed Florida tours of *The Amazing Adventures of Dr. Wonderful (and Her Dog!)*, and *Katie Couric's The Brand New Kid*. Jeff recently did some writing and consulting for Universal Orlando, Dollywood, and Dolly Parton. He wrote/co-directed large-scale stage spectaculars for the city of Manaus, Brazil, and wrote/directed digital films seen daily at Okada Resort in Manila, Philippines. Jeff received the Alumni Professional Achievement Award from Winthrop University and was spotlighted by the Orlando Sentinel as one of Central Florida's Most Fascinating People and one of Ten People Who Make Orlando A Better Place To Live. He received a Distinguished Career award from Florida Theatre Conference. He serves on many arts committees and panels including for the National Endowment for the Arts. He served as Executive Producer for the Orlando Citrus Parade and is an Emmy-nominated writer for the *National Cherry Blossom Festival Celebration & Parade*, *Nashville Christmas Spectacular*, *National Memorial Day Parade*, *American Valor: A Tribute To Our Military*, and the *Philadelphia Thanksgiving Day Parade*, all nationally syndicated. Jeff is the founder of Conway Cares, an initiative that provides food for 150+ schoolchildren each week that are struggling with food insecurity. In 2015, the City of Orlando proclaimed "Jeff Revels Day" to honor his work.

Ericka Rivera-Brown | Backstage Crew

Ericka is excited to join Orlando Family Stage for a second time for *Giraffes Can't Dance*. Ericka first worked with OFS on *Click, Clack, BOO! A Tricky Treat* as a Spotlight Operator in 2023. She has also assisted in building sets for Icehouse Theatre for over 5 productions including *Last Round Up of the Guacamole Queens*, *Grumpy Old Men*, and the upcoming production *Leading Ladies*, performing additional duties as Stage Management and Lighting Tech from time to time. Additionally, Ericka has partnered with Whiskey Theatre Factory to provide set design, costumes, and props for their production *The Vast of Darkness* featured in the 2023 Orlando International Fringe Theatre Festival and will be re-featured in the upcoming FestN4. She aspires to become a Set Designer and has been thankful to have gained experience and new relationships in theatre throughout the year. Ericka is so thankful for the support of Mike Brown, her husband, and Buddy Fales, her mentor friend, as she continues this journey to fulfill her dreams.

Bert Rodriguez | Music Director

Bert works extensively as a musical director in the region. Some recent shows under his music direction include: *Dracula: The Musical* (Opera Del Sol), *The Comedy of Errors*, and *Boulevard of Bold Dreams* (Orlando Shakes), *The Hunchback of Notre Dame* (Athens Theatre), *In The Heights* (City Springs Theatre Company), *And The World Goes Round* (New Generation Theatrical), *A Chorus Line*, and *In The Heights* (Theater West End), *On Your Feet* and *Beauty and the Beast* (Garden Theatre), *Marie and Rosetta* (freeFall Theatre), and *Broadbend, Arkansas* (The Studio Theatre at Tierra Del Sol). He spent over a decade music directing for Norwegian Cruise Line. Proud member of Actors' Equity Association and American Federation of Musicians.

Jared-Austin Roys | Spot Light Operator

Jared is an Orlando-based performer who recently earned his BFA in Musical Theatre from The University of Central Florida. He has performed throughout Central Florida at theme parks and theatre's such as Orlando Shakes, Theater West End, and Titusville Playhouse. Some of Jared's favorite roles include: Leaf Coneybear (*The 25th Annual Putnam County Spelling Bee*), Pinocchio (*Shrek the Musical*), and Harold Bride (*Titanic*). In his free time, he enjoys playing Pokémon and rewatching *American Horror Story*. To learn more about Jared, visit his website www.jaredaustinroys.com

Mary Sienko | Costume Shop Coordinator

Mary has had a lifelong love of theatrical costumes and cosplay. She is a graduate of the Savannah College of Art and Design with a BFA in Fashion Design. After working on costumes for local theaters in Georgia and interning in the Orlando Family Stage Costume Shop in 2019-2020, she is thrilled to call Orlando Family Stage home. She will always be grateful to her wonderful parents for supporting her creative endeavors.

Carrie Kasten Smith | Sr. Director of Production

Carrie has spent the past 19 years playing with Orlando Family Stage as a stage

manager, production manager, and coordinator for Orlando Family Stage's internship program, sensory-friendly performances, and Design & Tech Academy (2015–2017). She holds a BFA in Theatre with a concentration in Stage Management from the University of Central Florida. Her greatest professional accomplishment is sharing her work with her son.

Shonda Tapia | Associate Director

Shonda has truly come full circle here at Orlando Family Stage. She is thrilled to have been on stage in *The Paper Bag Princess* as Pricilla the wedding planner, and in *The Voyages of Dr. Dolittle* as Dab Dab the duck and Miranda the bird. She is now the Orlando Family Stage Education Programs Manager and is thrilled to bring the wonderful book, *Giraffes Can't Dance*, to life. She dedicates the visions she sees and the pictures she creates to the memories of her mother Sandra L. Thurman and her grandmother Mazel Ramey, and to her husband Kahlid Tapia.

Myles Thoroughgood | Choreographer

Myles debuted as the choreographer of The Disney Channel's New Mickey Mouse Club. His experience on national television includes programming for NBC, Nickelodeon, TLC/Discovery Network, and Sesame Workshop. Myles has choreographed several Central Florida musical theater productions including Orlando Family Stage's *Click, Clack, Moo: Cows That Type*; *You're A Good Man, Charlie Brown*; *Just So*; *School House Rock, Live!*; *A Year With Frog and Toad*; *HONK!*; *Blue's Clues Live! A Most Spectacular Place*; *Chasing George Washington*; *Berenstain Bears OnStage: A Bear Country Musical*; *Freckleface Strawberry The Musical*; *Polkadots: The Cool Kids Musical*; *Disney's The Lion King Jr.*, *Christmas Is Here Again*; *Pickle Chiffon Pie (Premiere)*; *Rodgers + Hammerstein's Cinderella*; *Make Way For Ducklings: The Musical*, and *Junie B. Jones The Musical Jr.*

Kyle Wiehe | Director of Production and Scenery

Kyle lives in Mount Dora with his wife Becca and their labradoodle Poppy. After growing up in Central Florida, he lived in Tennessee and Arkansas before making his way back to Orlando and joining Orlando Family Stage in 2013. Some of Kyle's favorite Orlando Family Stage shows have been *A Christmas Story The Musical*, *Disney's Newsies*, and *Madagascar – A Musical Adventure*. In his free time, Kyle enjoys reading, playing the guitar, and photography.

QUESTIONS FOR THE RIDE HOME

- 1 What was *Giraffes Can't Dance, The Musical* about? If you had to summarize the play in one sentence, what would it be or what would be the main message or messages, in your opinion?
- 2 When the other animals made fun of Gerald, how did he feel? How did you know? What can you say if you see someone being teased for being different? How can you help?
- 3 Cricket tells Gerald that the people in a community must show up for each other. How many different communities are you a part of? Can you describe how people help each other in your community? What is one way you could help your community?
- 4 Gerald dreams of dancing, but does not think he can do it. What is something you are scared of doing? What can you do when you are scared to feel more brave?

Presented by Florida Blue as part of the Theatre Enrichment Program

*GIRAFFES CAN'T
DANCE*
The Musical

NUTRITION FACTS

One Full Serving Per Show

Amounts Per Show

**Topics may overlap, so percentages do not necessarily equal 100%*

Performance Time

70 Minutes

Story Morals*

% of Story Focus Per Topic

Standing up for others 85%

Being kind 98%

Community is vital 75%

There is magic in you 95%

Welcoming others 60%

Ingredients List

Dancing, world cultures and languages, drumming, bullying, friendship, listening, moonlight, learning new skills, audience participation, animal antics

Show Genre

Musical

Pre-Show Activities

Beginning 60 Minutes Before Show

Lobby Scavenger Hunt

Themed Concessions

Crafts With Take-Home Creations

*Florida
Blue* 

Part of Orlando Family Stage's "Enrichment Program," generously sponsored for the 23/24 Season by Florida Blue.



ORLANDO FAMILY STAGE

IN PARTNERSHIP WITH UCF

Donor Recognition

At Orlando Family Stage, we believe that every contribution, no matter the size, makes a huge difference in our efforts to provide quality programming for our community. As a non-profit organization, we rely on generous contributions made by our patrons and donors to support our productions, education programs, and community initiatives. Together, we can bring the magic of live theatre to children of all ages and backgrounds, and make a significant impact in our community.

PRODUCER'S CIRCLE (\$5,000+)

The Shubert Foundation
Edyth Bush Charitable Foundation
Florida Blue Foundation
Frank Santos
Massey Services, Inc.
Fred and Judy Klipsch
Ashley and Gary White
Jill Wilkinson
Orlando Health
Universal Orlando Foundation
Whitney Morse
Kirtus & Cheryl Bocox
Elizabeth and Justin Horn
Disney Worldwide Services, Inc.
Florida Theatrical Association
Ginsburg Family Foundation
John & Shirley Horn
Martin Andersen-Gracia Andersen Foundation
Megan Ann Rasmussen
Orlando Magic
Valley National Bank

DIRECTOR'S CIRCLE (\$1,000 – \$4,999)

Shingle Creek Elementary
Bickley Wilson
First Horizon Foundation
City of Orlando

Dr. P. Phillips Foundation
Eagles Nest Elementary School
Bentley Elementary
Bill and Kate Martin
KPMG LLP
Evans High School
Lake Silver Elementary
Betty Case
Crozier Family Foundation
Lake George Elementary
Shenandoah Elementary School
Kiwanis Club of Orlando
Lovell Elementary School
Wolf Lake Elementary School
Janell and Wyatt Scott
Christian and Kathleen Green
Denise Hall
Winter Springs Elementary
Chain of Lakes Middle School
Thornebrooke Elementary
Autumn & Andrew Ames
Millennia Elementary
Lauren & Timothy Trudell
Annunciation Catholic Academy
Azalea Park Elementary
Killarney Elementary School
Charlene and Allen Thibedeau
Angela Cohen

Conway Elementary School
Beth Barnes and John Crocitto
Bill "Roto" Reuter
Brendan and Melody Lynch
Christine Lapinski
Craig and Jeanne Weeks
David and Judy Albertson
Jeff & Mindy Moore
Joseph & Susan Warren
Kathryn Seidel
Lance and Susanne Walker
Marty and Jim Heekin
Michelle and Deryck Harmer
Patty & Jim DeYoung
Synovus Bank

PLAYWRIGHTS (\$500 – \$999)

Chris and Katie Brown
St. Mary Magdalen Catholic School
Alexandra Galford & Benjamin Gonzalez
Oak Hill Elementary School
Jim and Carolina Timon
Craig and Jody Maughan
Sadler Elementary School
Patrick and Sheila Aland
Adam and Jennifer Scheinberg
David Riccardi
Heather Comer
Diane Messina
Gene & Becky Columbus
Carlos & Cathy Barrios
Daniel & Jennifer Tenenbaum
Holly Rohrer
Jackie and Roderic Sward
Jake & Leanne Herrel
Jamie and Brian Tipps
John Ruffier
Neil and Malka Webman
Nicole Ekendahl
O'Ann and Pat Christiansen
Paul Lartonoix
Roseann Harrington
Stacia Wake
Steven Grant
Tim Kelley

STARS (\$250 – \$499)

Marc Rothschild
Jill Gerry
Denise Hatcher
Anonymous Anonymous
Mitzi and Tony Hollowell
Dan and Jill Croom
Linda Peattie
Vanbarry's Public House
Amy Fondo
James & Sarah Martin
Joe Gaida
Leigh Anne Nieman & Ron Evans
Mari Moehl
Peggy and George Albu
Titan Properties
Jeff and Liz Butler
Edward and Diana Isola
Rasheem and Jessica Johnson
Dw Perkins
Jenna and Stephen Stallard
John & Linda Phelan
John and Virginia Rigsby
Mary Palmer
Nicolette Blount
Rita Lowndes
Stephen & Paige Looney
Thomas and Lisa Grant
William Silverman

ENSEMBLE (\$50 – \$249)

Joyce Fortin
Tanya & Wayne Easterling
Frosty Shaved Ice
Benjamin and Amy Fortin
John P. Gallagher
Ashley & Wendy Peeples
Benjamin and Patricia McKendall
Dennis & Beverly Salmon
Donna MacNichol
Edward and Edith Haddock
George Jackson
James P. Caruso and Christine S. Caruso
Charitable Fund
Jeff and Karen Revels
Joseph and Monica Kovacs
Kenneth Ng
Matt Inman

Phillip and Jennifer Anderson
Stefani Schulze
Vicki & Michael Landon
AmazonSmile Foundation
David Courtright
Susan Torrico
Raychel and Tony Cesaro
Aaron Rowe
Charities Aid Foundation
Stacey Schaitz
Diane DiFebbo and Mike Lagos
Dominique and Ronald F Piccolo
Joanne Garner
John and Nancy-Lee Thompson
Maxine Maloy
Patricia White
Cholo Dogs
Heart of Florida United Way
Byron Wiehe
Dr. James and Jami Ginn
Dr. Marie H. Hansen
Inda Peoples-Jones
Jennifer Lowndes and Tim Boeth
Steven and Nancy Price
Taryn Camp
Alana Waxman and Dario Ayala
J. L. Perez
Ken and Delaina Baker
Kelley Blakely
Daniel and Diana Galante
Alison Brower
Andrew & Nancy Lofredo
Brenda DeForrest
Carolyn Minear
Catherine and Tony Sciortino
Catherine Ciullo
Cindy White
Donna and Brandon Barley
Dr. Scott Greenwood & Dr. Pamela Freeman
Elizabeth Davis-Houston
Elizabeth Maupin Household
Elizabeth Todd
Emily Torrado
Frank and Etta Jean Juge
Gerald and JoAnn Bloom
Jackie Gheen
Jacqueline Palladino
James and Ceme Curley

Janet Nething Walker
Janette Diaz Household
Jason Arellano and Lee Cartagena
Jerry Janesick and Cheryl Bollinger
John and Rebekah McReynolds
John and Rhona Fournier
John Columbus
Justin Harmon
Larry Little
Laura Firtel
Lenore and Howard Roland
Linda Shecirer
Mark Black
Mary Sienko
Matthew and Tara Moore
Melanie Mathis
Melissa Madden Brown
Michael Wainstein & Kamon Satayaphanitkul
Mitchell Levin and Swantje Knye-Levin
Monica and Bryan Tyson
Nancy Rager
Odd-O-Ts' Entertainment
Pat Marinaccio
Quinn Doyle
Rachel and Rob Gebaide
Rebecca Weiss Household
Renee and Joe Schneider
Robert and Debra Brett
Sandra Carbone
Scott and Susannah Randolph
Sherri Avara
Susan and Walter Villela
Will Benson
William Price
Edward LaLonde
Carey Andreoiu
Liza Frank Caraglio
Shawn and Connie Smith
Supriya and Joshua Franklin
Wendy Meyer
Isabel and Lewis Warren
Jolene and Justin Patrou
Maxine Derington
Melissa and Garret Alpers
Danica Alexander
Lyubov Lyubitska
Amber Warren
Malia Gunnarsson

Matthew Lavoie
Dennis Sobeck
Sara Homburger Johansson
Alan & Susan Davis
Alexandra Petit
Barrie Click
Beverly Stewart Household
Brian Battles
Carol Kettering
Carrie Cassidy
Charles Hymes
Charles J.Kramer
Charles Pierce
Cheri Smith
Christina & Gabriel Preisser
Christine Isham
Christy Woodruff
Daphne Winckler
Dr. and Mrs. Gregory N. Boger
Elizabeth Brewer
Elizabeth Gwinn
Emily Freeman
Erin and Daniel Ozment
Felipe Sousa-Lazaballet
Harshla Singh
Helen Foster
InterAmerica Stage Inc.
James Bradley
Jean Gray
Jeanelle Odum
Jessica Iaconis
Jessica Martin
Joyce and Joseph Casalese
Judy Wilcox
Julia Hard
Julie Bloom
Katherine Welty
Keith & Leigh Parks
LaLisa Harris Household
Larry and Alice Fortunato
Laura Haag
Leah Benner
Linda L. Woods
Marcia F. Kahn
Marisa Rozefort
Marsha Hill
Mary Maxwell
Michael and Diane Levine

Michael McMeekin
Natalia Foote
Nico Juber
Patricia Hahl
Sharon and Paul Conway
Sue Wilder
Suzana Vucajnk
Trace Trylko
Trudy Wild
Valerie Solomon
Victoria Wells
William and Tina Craft



THANK YOU DONORS!

2023 CONTRIBUTORS TO
UNITED ARTS & THE COLLABORATIVE
CAMPAIGN FOR THE ARTS BETWEEN
JULY 1, 2022 – JUNE 30, 2023.

United Arts is deeply grateful to its donors and community partners for their investment in and support of Central Florida's creative community and the enormous impact it has on our lives every day.

2023 CORPORATE GOVERNMENT DONORS

\$100,000+

City of Orlando and Employees
Darden Restaurants, Inc., and the
Darden Restaurants Foundation
Dr. Phillips Charities
Elizabeth Morse Genius Foundation Inc.
Florida Department of State
National Endowment for the Arts
Orange County, Florida and Employees,
and
Orange County Arts & Cultural Affairs
Walt Disney World Resort and The Walt
Disney Company Foundation
University of Central Florida

\$50,000 – \$99,999

Anonymous
Duke Energy and Duke Energy
Foundation
and Employees
Frontline Insurance and Lanier
& LaVoyce Porter
The Massey Services Family
and Team Members

\$25,000 – \$49,999

Florida Blue
Greater Orlando Aviation Authority
Orlando Magic and Employees, and
Orlando
Magic Youth Foundation
Universal Orlando Foundation

\$10,000 – \$24,999

Anonymous
The Ballet Academy of Central Florida
Bank of America
Central Florida Foundation

City of Winter Park
Florida Charities Foundation
Lowndes and Employees
OUC-The Reliable One and Employ-
ees
OX Group, LLC
SchenkelShultz
Verizon
Wisne Charitable Foundation
Writer's Block Bookstore

\$7,500 – \$9,999

Get Off the Bus LLC
Harbinger Capital Advisors
KPMG, LLP
Seretta Construction, Inc.

\$5,000 – \$7,499

Anonymous
AmFund
The Commerce Fund of Florida
Crystal Photonics, Inc.
Darden Credit Union
Drew Johann on behalf of Stifel
Ernst & Young LLP
Fifth Third Bank
Florida Theatrical Association
Gary Lambert Salon in honor of Rob-
ert Hill
MSL CPAs & Advisors
Orlando Health
Publix Super Markets Charities
Rotary Club of Winter Garden
SPM, LLC WeldenField Development
Uphot

\$2,500 – \$4,999

Anonymous
ABC Fine Wine & Spirits
Wayne Dictor/Dictor Financial LLC
Downtown Arts District
Drive Shack
Edyth Bush Charitable Foundation
Hilb Group of Florida
Joshi Law Firm, PA
Little Diversified Architectural Consulting
The Mayflower Retirement Center, Inc.
NEI General Contracting
The Orlando Law Group
Orlando Sanford International Inc.
Qwick
Ray & Nicole Reed – Cutco Cutlery
The Schaller Group
Tavistock Development Company
Edward Whalley – Anthros Inc.
Todd Wheeler – Wheeler Projects Inc.

\$1,000 – \$2,499

Anonymous
Advanced Behavioral Health Center
The Balmoral Group, LLC
CannaBus LLC
Caribe Royale Orlando
Diane Meiller and Associates Inc. – Diane Meiller–Cook
The Earl and Bettie Fields Automotive GroupFoundation, Inc.
Mount Dora Adventure Tours
Enterprise Fleet Management
Equitable Wealth Management Strategies
Douglas Foreman Fringe Benefit Plans
Full Sail University
Gold Key Roofing
Greg Neal – Neal Pottery
Hilton Orlando
HIP3 Home Improvement Pros
Hoagland Law PLLC
Hometown Entertainment
The Joelson Foundation
Leviton Manufacturing Company
Marcus & Millichap
Meehle & Jay PA
The Mount Dora Bistro
Mount Dora Women's Committee of Fine Arts
Osceola County Board of County Commissioners
Park Ave CDs
Maegan Pierce and Behavior Concierge
Pineloch Management Corporation
Piñero Preventive Medical Care

Premier Oracle Elevator
The Ritz–Carlton & JW Marriott, Grande Lakes
Rollins College
Seaside Bank and Trust
Shamrock Management LLC
Sihle Insurance Group
Steamroller Studios
Sunrise Bank – Barry Griffiths
Tailside Aviation
Valencia College
Weedies World Famous
Winter Park Publishing Company LLC

2023

INDIVIDUAL & FAMILY FOUNDATION DONORS

\$100,000+

Anonymous
Laurence and Susan Costin
Ginsburg Family Foundation
Helen Leon

\$50,000 – \$99,999

David and Judy Albertson
John and Lee Benz
Frank J. Doherty
Janet Gamache
Kay Hardesty Logan Foundation
Larry Kellogg and Cathy Roth
The Mary Palmer Family Foundation
Harold and Rosy Mills
John and Audrey Ruggieri
Frank Santos

\$25,000 – \$49,999

Anonymous
Jim and Barbara Caldwell
Tom and Kathy Cardwell
Elaine Berol Taylor & Scott Bevan Taylor Foundation
Mr. Alex and The Hon. Cynthia Mackinnon
Wayne and Robin Roberts
Sally and Jack Schott
Jim and Valeria Shapiro
Winifred J. Sharp and Joel H. Sharp, Jr.
Chuck and Margery Pabst Steinmetz
Brandon Colte Suggs
Dr. Joe and Sue Warren
Leslie Warrington Bailey
Al and Brea Weiss

John & Lisa Westlake
Gail and Michael Winn

\$10,000 – \$24,999

Anonymous
Keith and Eleanor Ackermann
John W. and Linda Cone Allen
Margaret Atkins
Colonel Christian J. Becht and
Mrs. Elizabeth M. Becht
Caroline Blydenburgh
Jill and Dean Bosco
Susan K. Bright and Lawrence W.
Stevenson
Jody and Roslyn Burtram
Debbie and Larry Cappleman
Chicone Family Foundation
Steven P. Clawson
Hillary and Jay Cohen
Valerie and Paul Collins
Elizabeth Nerius Conklin
Judy Duda
Andrea T. Eliscu
Linda Ferrone
Freddi and Jim Goodrich
Grant E. Gribble
Denise Hall
Dr. Stephen F. Heller
The Henderson Family Foundation
Bea Hoelle-Hawes
Michael and Aimee Kakos
Cathy Karunaratne
Mary F. Kelsh
Skip Kirst & Eric Hogan
Fred and Judy Klipsch
Pat and Audrey Knipe
Rita Lowndes
Melody and Brendan Lynch
David and Eydie MacInnis
Jay and Traci Madara
Ken and Trisha Margeson
McIntyre and Skaggs Charitable Trust
Jason & Ronni Mendelsohn in honor of
Robert Lurie
Geoffrey C. Moehl
Jeff & Mindy Moore
Scott Moscrip
Jim and Mari Moyer
William and Kyra Muntan
Laurie Nicoletti
Mark and Jennifer O'Mara
Deede Sharpe and John Parker
Jim and Alexis Pugh
Shyla G. Reich in memory of Steve Reich
John Daniel Ruffier
Rick Schell and Scott Joseph
Paula Shives
Ann and Charles Simpson
Bosco R. and Beverly J. Slaughter
Diane and Robert Smedley
Andrew Snyder and Christopher
Nemethy
Ellen and Simon Snyder
Stephen H. Goldman Charitable
Foundation
Philip & Sigrid Tiedtke
Larry Tobin

Tre
Kathryn C. Ustler
Hardy Vaughn and Betty Brady
Nancy R. Wagers
Lance & Patricia Walker
Jayne and John Willis
Nancy & Jonathan Wolf
Larry and Laura Zirbel
Zimmerman Foundation, Inc.

\$7,500 – \$9,999

Anonymous
Aunt Jeanie
Dykes and Lisa Simonton Everett
Sue Ellen Franklin
Jane and Charlie Gibbons
Bruce Gould
Jacquelyn Hughes
Dr. Mitch and Swantje Levin
Blair and Diane Murphy
Paul Oppedisano
Mrs. Sarah Ravndal
Dr. Richard Sandler
Geanne and Adrian Share
Larry Slung
Neil and Malka Webman
Craig and Jeanne Weeks

\$5,000 – \$7,499

Anonymous
Lindsay and Dan Abt
Mr. and Mrs. P. Andy and Autumn
Ames, In Memory of John M. Tiedtke
Phil and Jennifer Anderson
George and Leslie Andreae
Ann & Bill Wallace Foundation
Jim and Elli Atchison – Atchison Family Fund
Walter J. Bissett and Bernard Foong
Sally Blackmun and Michael Elsberry
Daniel Patrick Blumberg
Kirt and Cheryl Bocox
James F. Brown, MD
Cynthia Brumback
Bettina Buckley and Oscar Shearer
Drs. Lynn Le and Wei-Shen Chin
Bonnie and Van Church
Mrs. Claudia De Garay-Debler and
Mr. Richard Debler
Francie and Wayne Dear
Susan M. DeNardis
Jim Dorman
Kristy Doyle Turner & Bob Turner
Bill and Jennifer Dymond
Janette Estep
Susan and Randolph Fields
Sarah B. Flynn
Barbara and Richard Fulton
Dr. Matt Gay
Marilyn S. Goldman
Kenneth and Marcia Goodwin
Mrs. Janice Granier Gruber
Larry Gutter and Debbie Meitin
Mr. and Mrs. L. P. Herzog
Donna and Bill Hoffman
Elizabeth and Justin Horn
Eric Horner and John Hamilton
Mimi Hwang

Dr. Diane M. Jacobs
Jeff and June Flowers Giving Fund
Kathy Johnson Berlinsky
Keith and Claudia Kasen
Henrietta Katzen
Sheryl Kerr
Embry J. Kidd and A. Noni Holmes-Kidd
Matthew and Laura Kleinsteuber
John P. Klumph
Andrea and Philip Kobrin
Harvey Kobrin and Faye David
Robert & Melissa Kohn
Diane N. Kuhl
Dr. Susan Cohn Lackman and
Dr. Richard D. Knapp
William and Barbara Lynch
Jody and Craig Maughan
Dr. E. Ann McGee
Suzanne McGuire
Jamee & Gilbert Miller
Beth and Jack Nagle
Steve Nakagawa
Daniel and Dana O'Keefe
Rosemary O'Shea
Phillip and Susan Sargent Family
Charitable Fund
Dr. Gloria Pickar
Christina and Gabriel Preisser
Chris Ranck
John and Monica Rivers
The Roper Family Foundation
Jeffrey and Lisa Rosen
Corrine K. Roy
Maria Ruiz-Hays
Steve and Melanie Ruta
Marco J. Santoro and Kimberly Dorsett
James and Martha Seneff
Dr. John V. Sinclair and Dr. Gail D.
Sinclair
Martha Stonerock
Dr. Stephen Summers
Susan Forster Family Trust
Christopher and Maria Sutorik
George R. and Eleanor C. Taylor in
memory of The Rev. Eric Ravndal, III
Alex Tiedtke
Joan and Harry Travis
Tamara L. Trimble
Leila Edgerton Trismen
Dr. and Mrs. Paul and Madeleine
Vilmos
Waggoner Foundation in memory
of Robert Waggoner
Robert Wahl
Dr. Carolyn Walker Hopp
Louise and Richard Weiner
Barbara Weinreich
Bill and Alice Weir
Alan Whittaker
Connie Wightman and Rob Reedy
Shelburn and Rita Wilkes
William Newkirk and Cheryl
Tschanz Family Foundation
Teresa Williams
Bob and Janet Ziomek

\$2,500 – \$4,999

Anonymous
2 People
Russell P. Allen
Andy and Phyllis Ayoob Fund
Susan and Gordon Arkin
Tony and Sharon Arroyo
Marci Babione
David B. Baer
Beth Barnes and John Crocitto
Joe and Carol Bert
Carol-Lynn and Frank Bevc
John and Diane Bishop
Carolyn Blice
Albert and Cheryl Bogdanowitsch
Dr. and Mrs. Gregory N. Boger
Sara R. Brady
Pam Brandon
Sherry Bremer
Rafael A. Castilho
Lisa and Raul Ceide
Linda W. Chapin
O'Ann and Pat Christiansen
Jennifer Clark Evins
Dottie Clendenin
Michael and Jennifer Coleman
Cheryl and Tom Collins
Ted and Carol Conner
Mark and Laura Cosgrove
Kathy K. Cressey
Dan Croom and Jill Robison Croom
Susan M. Curran
Alan and Susan Davis
Drs. Ronald and Nancy Davis
David Duncan
Patsy L. Duphorne
Michael Dwulit
Dana and Diana Eagles
Ted B. Edwards
George S. Fender in honor of American
military forces
Steve Fessler and Randy Lord
Sam Flax
Clive Frazier
Rachel and Rob Gebaide
Kathryn and Bud Grammer
Steven W. Grant and Janice Paperny
Barbara Grodin
Dr. and Mrs. H.E. Gross
Larry and Debbie Halye
Roseann Harrington
Dave and Nancy Harvey
Jim Helsing and Suzanne O'Donnell
Larry Henrichs
Ann Hicks Murrah
Rob & Michael Highfill-Spradlin
The House Family
Dr. Mimi Hull
Beth and Jack Isler
Toni Jennings
Patricia A. Johnson
Bette Jore
Frank and Etta Jean Juge
Eliza and Matt Juliano
Jennifer Lowndes and Tim Boeth
James R. Lussier and Nancy C.
Jacobson

John and Pamela Lyle
James and Sarah Martin
David R. Mattson
Deborah L. Mead
Albert and Maija M. Michejda
Dr. Alfonso Migliara Jr.
Andrea and Van-Tam Nguyen
Jenise Osani
Michelle and David Peck
David Percival
Dw Phineas Perkins
Dr. Daniel and Lesley Podberesky
Richard C. Riccardi
John and Virginia Rigsby
Nicholas Riippa & Dominic Del Brocco
Patricia Rixmann
Lesley and Barry Rubin
Ann Saurman
Eileen Schein
Sara and Bill Segal
Mr. Jamel Shabazz
Bill and Dottie Silverman
Mr. and Mrs. William Slot
Paula Stuart
Carol Studer
Jackie and Rod Sward
Rebecca and Blaine Sweatt
Winston Taitt
Leslie J. Temmen
Cynthia Tomlinson
Alvin Urena
Stacia L. Wake and Karl Schuberth
Harold and Libby Ward
Dr. Peter Wearden
Peter and Frances Weldon
George and Cynthia White
Michael & Diane White
Ed Wimp
Lori Pearson Wise and Daniel Wise

\$1,000 – \$2,499

Anonymous
R. Scott Abrahams
Millicent Adams and Michael Anthony
Jeanne Bray Ailes
Joseph Ales, Jr. and Stephanie Curry Ales
Kay Allen
Edwin L. Anderson
Anonymous in memory of Clifford and Marilyn Lee
Melinda B. Antalek
Tim and Sue Antonition
James Armstrong
Ellen Arnold
Maria-Elena Augustin
Kai Bailey
Tom and Lara Baker
James and Deborah Balaschak
David F. Baldree and Derek Carter
Nathan and Lynda Balint
Richard and Nancy Banks
Mr. and Mrs. Peter C. Barr
Cathy and Carlos Barrios
Jody and Nicole Barry
Andrea and Dick Batchelor
Deborah and Edward Beidel
Bradford and Jennifer Benn

Jane Berg
Jay H. Berlinsky
Daniel Betancourt
Paul and Collette Beuther
Amogh Bhonde and Sukhada Gokhale
Jacques D. Blais
Ann & Derek Blakeslee
Darryl and Mary Bloodworth
Lauren and Barry Bloom
Theresa and Angelo Boer
Bill Booth
Donna Borko
John D. Boulden
Carolyn E. Bourne
Jacqueline Bozzuto
Berl and Katherine Brechner
Alana and Matt Brenner
Breck and Lauren Brewer
Howard Britt
Maureen and Chris Brockman
Lyman and Janice Brodie
Marian and Edward Bromberg
Lawrence D. Brown, M.D.
Randy Brown
Christine and Hans Bucheli
Jeff Buhler
Eva Burbank Murphy
Stephanie Burk
Michael and Mabel Burrige
Carlos and Tracy Carrasco
Alexander and Melinda Cartwright
Michael and Linda Cegelis
Diana and Fred Chambers
Frank and Ellie Chase
J. Gene Chen and C. Skye Chen
Jason Chepenik
Rachel Chipman Allen
Angela Cohen
Dr. Jeff Cohen and Luci Belnick
Kelly Cohen
Dr. Anthony and Joan Colandrea, Jr.
Beryl R. Colbourn
Heather Jean Frances Comer
Brian Comes
Tracey Conner
Robert and Athalia Cope
David S. and Carol A. Cowan
Dr. Jill and Marc Craddock
Mary Cravatta
Terry and Paul Creighton
Lisa Cuatt
Cherie and Bill Dacko
Mr. and Mrs. Noriko and Tom Davatelis
Diane Davey and Dave Wiebe
Doug Davis and Jeri Weigandt
Elizabeth Davis, MD
DEM Guys
Mr. Duncan DeWahl and Dr. Juliet Burry
Patricia C. and Jim A. DeYoung
Cara and Alex Dobrev
Carmen Dominguez
William and Michelle Doster
Donna Dowless
Gail and Jim Downing
Lisa Durant
Sheldon Dutes
Dr. Perry and Eileen Dworkin
Jason Efron
Rex and Kathy Elbert
Tom and Janet Elrod
Endean Fund – Mr. Jeffrey Endean and

Dr. Myrna Edean
Catherine M. Engelman
Lee and Carolyn Eubank
Dr. Heather Fagan and Mr. Robert Fagan
Dr. Jay and Randye Falk
James Farrell and Andrea Massey-Farrell
Michael Filandro
Mr. and Mrs. Edward and Laura Firth
Nancy Ellen Flint
John and Rhona Fournier
Martin and Silke Galassini
Deborah and Lawrence Gendzier
Dr. and Mrs. Charles W. George
Alan Gerber
Stephanie Ghertner
Nancy and Fiona Gibbons
G. Randall and Nancy Gibbs in honor of
John Sinclair
Jon M. Gibbs
Drs. Brad and Kerry Giedd
Suzanne E. Gilbert
Biff and Kathy Godfrey
Neal Goldner
Stephen and Diane Goll
Alvaro and Routa Gomez
The Shelton D. Granade Family
Christopher and Pamela Greening
Dr. Scott Greenwood and Dr. Pamela
Freeman
Chuck and Lisa Gregg
Christopher Grim and Melissa Queen-Grim
Jean-Marie Grono-Nowry
Barbara Grossman
David W. Gurney, Ph.D.
Jessica and Vance Guthrie
Marty and Mike Haddad
Edye Haddock
Wallace H. Hall
Andrew and Monica Hand
Andrew Hardy & George Kalogridis
Deryck and Michelle Harmer
Paul M. Harmon
Dr. Grant Hayes
Marty and Jim Heekin
Paul Helfrich and Jessica Hung
Nathan W. Hill
Danielle Saba Hollander
David Horgan
Mike & Kitti Hornreich
Allison and Peter Hosbein
Andrew and Kara Howell
Bonnie C. Hubbard
Jacqueline and Vincent Hughes
Kevin Hunsicker
Terrance Hunter and Ty' Ree Brown
Ellen S. Hurwitz, PhD
In honor of Peter Schreyer, Crealde's
Executive Director
In memory of Toeknee Caporelli
Mr. and Mrs. George Indest
Allen and Dana Irwin
Libby Jackson
James P. Caruso and Christine S.
Caruso Charitable Fund Inc
Caroline and Hugh James
David and Lisa Jasmund
Angie Jernigan
Jim and Wendy Malcolm Fund
Nigel John and Heather Badawi John
Laura Johnson
Daun and Lisa Junkerman
Hal Kantor

Allan E. Keen
RK Kelley
Tim Kelley
Mary Beth Kelly
Charline Kennedy
Richard and Martha Kessler
Kristopher and Brooke Kest
Sheri Kettula and Denise Marra
Charles and Olga King
Scott King
Carol Klim
Eric and Rachael Kobb
Joshua Kolbert
Christina and George Kotsonis
Micheline and Sumner Kramer
Holly M. Kreisler
Otto and Joan Krumpholt
Patricia Lancaster
Linda Landman González and
Roberto González
Wendy Landry
Paul Lartonoix
Dr. Sarah Layton
Mark and Courtney Legett
Dr. Michael and Diane Levine
Mark and Noreen Levitt
Miriam Levy and Dennis Pope
Jack Lord
Leyse Lowry
John MacDougall & Jame Lee Mann
Dr. Jim Madison
Sheila Mahone
Renee M. Maloney
Bob and Julie Mandell
Edward Manning
Vesta and Stephanie Marks
Kevin and Ditian Dai Martin
Jennifer and Joaquin E. Martinez
Lauren Martinez
Hilary and Ming Marx
Elizabeth Maupin and Jay Yellen
Dr. Donald R. McGee
Deborah McGinn-Tyftler
Daniel and Elizabeth McIntosh
Genean McKinnon
Mack and Penny McLaughlin
Dr. Margaret McMillen
John and Rebekah McReynolds
Julian and Sheryl Meifin
Herbert and Toby Mendelsohn
Congressman John L. Mica
Mrs. Arthur L. Miller
Lois H. Mills
Barbara and Peter Minderman
Dr. Andrew Minear
Carolyn Minear
Tom Miranda and Paula Eldred
Clay and Kim Mitchell in memory of
Lucy Lane Mitchell
Linda Modrak and William Gallo
Robert and Jacqueline Molsick
Katy Moss Warner
Karla Muniz
Donna and Bruce Mylrea
Mark and Wendy Nation
Elisabeth Nevins
JoAnn Newman
Ken and Susie Ng
John Niss and Lisa Mouton
Odd-o-Ts' Entertainment in honor
of all those who keep us performing!
William and Sheila Oelfke

Dr. Ron and Nina Oppenheim
Harry and Jackie Pappas
Dr. Patricia Patterson
Ronald and Carrie Patterson
Beverly and Glenn Paulk
John and Anne Perry
Dr. Calvin and Pamela Peters
Peter Pfaff
A. Brian Phillips, P.A.
Eddie and Melanie Pipkin
Lizz and Tony Pittsley
James F. Plugh and Dr. Robin M. Back
George Poelker and Judy Black
Steven and Nancy Price
John and Ann Pucci
Mark Pulliam and Judy St. Peter
Jeanie and Fred Raffa
Debby Randall
Bill and Joan Randolph
Bruce and LeAnne Rapée
James and Beverly Rawlings
Roger D. and Rosalind Ray
Douglas and Carole Reece
Bill "Roto" Reuter
Kara Robertson
Pat and Randy Robertson
Dr. Cheryl Robinson
Ian D. Robinson
Dr. F. Robert and Norene Rolle
Joy Roney
Becky Roper and Mike Soucy
Dr. Ante and Mrs. Giulia Rudez
Judy Russell
Joan E. Sanchez
Diane L. Sandquist
Rocky Santomassino
The Sanz-Guerro Family
Frank and Christine Schornagle
Jim and Pat Schroeder
Stefani and Paul Schulze
Pamela Schwartz
Pat Scully
Kathryn L. Seidel
Olivia Share
James G. Shepp
Robert T. Shutts
Sidhu Family
Dr. Paul Skomsky
Scott & Tina Skraban
Charlie and Becca Sloan
Mr. and Mrs. Dennis Smith
Keith Smith and Marc Caglia
Robert and Janan Smither
Dennis Sobeck

Gary and Barbara Sorensen
David Spiegel
Shannon E. St. John
Linda L. Stanford
Barbara Stedronska
Dr. Louis and Sara Nathan Stern
Fred Lyndon Stone
Kyle Sturley
Rene Stutzman
Randall M. Sumner and George B. Mabry
Dr. Stella Sung
Vernon Swartzel
Jodi Tassos in memory of John Tassos
Patrick R. Terry
Michael Thomas and Rustin Davis
Amy Thompson
John and Nancy-Lee Thompson
Mark E. Thompson
Clinton and Renee Thompson
James William Tivy
Phoebe and Eliot Rosewater
Thomas and Debra Tschopp

\$1,000 – \$2,499

Karen Tucker
Jerry and Barbara Twedt
Benjamin Urrutia
Craig Ustler
Dr. Nancy van den Berg
Bernie Vatter
Dr. Jessica Vaught-Aviles and
Mr. Juan Aviles
Ms. Sterling S. Vestal
Massimo and Louise Villinger
Keith Walls
Robert Waltman
Deborah & William Watson
Larry and Lynne Watson
David Kevin Weaver
Miriam Weston
Trudy Wild
Atheka R. Williams Graham
Gwendolyn B. and Wilford J.
Williams
Jennifer Williams and James
Yannucci
Betty Jane and Cecil Wilson, MD
David & Diane Withee
Robert and Kate Wolverton
Leighton and Phyllis Yates
Tom and Penny Yochum
Philadelphia Zimmermann

United Arts is Central Florida's local arts agency that supports artists, creatives and arts organizations across the region. Through our programs, funding, and resources, United Arts helps local organizations serve more and do more. With the help of our community, the nonprofit organization ensures that the arts stay accessible to everyone in Central Florida. Since 1989, United Arts has raised over \$190 million towards art, arts education, culture, science and history — an ongoing effort to enrich our community and inspire future generations.

unitedartscfl.org



Orlando Family Stage | Board of Directors

Luz Aviles

Vice President, Customer Experience & Sales | OUC

Shelby Benson

Vice President, Business Banking | Valley Bank

Stephanie Burk

Marketing Manager | LYNX

Tina Craft

President | GFG Benefits

Pat Gallagher

General Counsel | Orlando Magic

Christian Green

Vice President | J.P. Morgan Private Bank

Jake Herrel (Secretary)

Attorney | Becker

Joseph Kovacs

Attorney | Lowndes, Drosdick, Doster, Kantor & Reed, P.A.

Madeline Lane

TYA Graduate Student | University of Central Florida

Paul Lartonoix

Assistant Dean, College of Arts and Humanities |
University of Central Florida

Dionna Little

Attorney | L3 Harris Technologies

Kate Martin (Chair)

Grants Manager | Dr. Phillips Charities

Lauren Martinez

Vice President, Marketing & Communications |
Orlando Economic Partnership

Jeff Moore

Dean, College of Arts and Humanities |
University of Central Florida

David Riccardi (Vice-Chair)

VP, Sr. Commercial Relationship Manager | First Horizon Bank

Adam Scheinberg (Immediate Past-Chair)

VP, Information Technology | Massey Services, Inc.

Anne Soule

Senior Director | Orlando Health / The Howard Phillips Center
for Children and Families

Jim Timon

Senior VP, Entertainment | Universal Destinations and Experiences

Jamie Tipps (Treasurer)

Managing Director | CFGI

Monica Tyson

Vice President | FifthThird Bank

Michael Wainstein

Director, School of the Performing Arts |
University of Central Florida

EMERITUS COUNCIL

Dr. Beth Barnes

Ret. Chief of Staff, VP | UCF, Office of the President

Carlos Barrios

Principal | Baker Barrios Architects

Dick Batchelor

President | Dick Batchelor Management Group

Cheryl Belfay

Owner | ADtangibles

Randy Berridge

President | Florida High Tech Corridor Council

Kirtus (Kirt) Bocox

Tax Partner | KPMG LLP

Bryan Boykin

Manager, Special Services | DPR Construction

Lyman A. Brodie

Associate Dean, College of Arts & Humanities |
University of Central Florida

Jennifer Dixon

Litigation Counsel | Amherst

Helen Donegan

Ret. VP, Community Relations | University of Central Florida

Roseann Harrington

Chief of Staff for Orange County Mayor Jerry L. Demmings

Bob Holmes

Ret. CEO | UCF Foundation, Inc.

Sonja Nicholson

Broker-Owner | Rose Properties, Inc.

Frank Santos

Chief Financial Officer | Rosen Hotels and Resorts

John R. Sprouls

Chief Administrative Officer | Universal Destination & Experiences

Laura Winn

Former Vice President | Tallahassee Area C

Mary Collier (Deceased)

Owner | Collier Jaguar

Ron Logan (Deceased)

Associate Professor | Rosen College of Hospitality