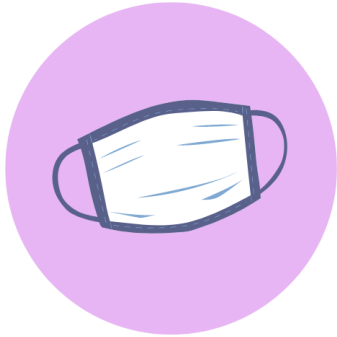




**ORLANDO  
FAMILY  
STAGE**

IN PARTNERSHIP WITH UCF



**Face masks  
are optional**

The health and safety of our patrons and staff are our top priority. Our comprehensive **Keeping Camps Safe – Student Guide** is based on guidance from Centers for Disease Control and Prevention (CDC) and recommendations from local government and is subject to change at any time.

We cannot wait to have you join us for a wonderful camp experience BUT **we must work together to safely have fun together**. To do that responsibly, all staff, students, and families must follow all health and safety guidelines.



**Stay home if  
you are ill**

**We are here to help you prepare for your camp!** We invite you to connect with us with questions or requests for additional information.



[education@orlandofamilystage.com](mailto:education@orlandofamilystage.com)



407-896-7365

## Health & Safety Guidelines

### Important Reminders

- Please monitor your own health and avoid visiting Orlando Family Stage if you are ill.
- We ask parents and students to take extra care to ensure that their student arrives with all materials needed for the day.
- Parents needing to drop-off/pick-up students outside of the normal drop-off/pick-up windows may pull up to the main entrance for curbside pick-up/drop-off.
- Hand sanitizer stations are located throughout the building to maintain a hygienic environment throughout the day.
- Students are encouraged to bring their own bottle(s) of water. However, water fountains are available to refill personal water bottles as needed throughout the day.
- Should a student feel ill during the day, they are provided a space away from fellow students to wait until they can be picked up.
- Orlando Family Stage uses CDC and EPA recommended disinfectant and cleaning products to clean high touch surfaces throughout the day.
- For additional information on keeping yourself healthy and safe, please refer to the [CDC's resources on COVID-19](#).

### Before Registering for Camp

- Review Orlando Family Stage's comprehensive Keeping Camps Safe - Health & Safety Plan. For questions or additional information, connect with an Orlando Family Stage team member by email at [education@orlandofamilystage.com](mailto:education@orlandofamilystage.com) or phone by calling 407-896-7365.

### Before You Arrive

- Consult [Center for Disease Control and Prevention \(CDC\) resources](#) to determine if your child or anyone they have come in contact with is showing symptoms of an acute respiratory illness consistent with COVID-19. These symptoms include a fever (100.4° F or greater), coughing, and shortness of breath. If these symptoms are present DO NOT report to camps, refer to CDC guidelines for COVID-19 testing, and contact Orlando Family Stage for next steps.
- Set your child up for a safe camp experience by reviewing with your child camp guidelines in addition to [cough and sneeze etiquette](#) and [proper hand washing techniques](#).
- Confirm your camp drop-off time slot and location (Welcome Point). This information is in your Preparing for a Safe Camp Experience email.

## Arrival

- At your scheduled drop-off time, report to your assigned drop-off location (Welcome Point) and remain in your vehicle. A designated staff member greets you to facilitate the check-in process.
- Once students have been checked-in, parents should clear the area to expedite other check-ins.
- Once inside the building, students wash their hands before reporting to their camp space.

## Pick-Up

- At your scheduled pick-up time, report to your assigned pick-up location (Welcome Point) and remain in your vehicle.
- To expedite pick-up, parents are provided two car tags with their student's last name to be placed on the dashboard for pick-up. This allows our staff to prepare your student for pick-up when your vehicle approaches the Welcome Point.
- Parents and approved pick-up individuals must have the provided car tag displayed on the dashboard when picking up. Approved pick-up individuals without a car tag displayed are required to present a photo ID to pick-up their student. Photo IDs must match the name on the approved pick-up list.
- A staff member escorts your student to the vehicle for curbside pick-up.
- Once your student's pick-up is complete, please clear the area to expedite other pick-ups.

**All students and their families must comply with Orlando Family Stage's health and safety protocols. Individuals that do not follow health and safety protocols will not be permitted to attend class. Orlando Family Stage continues to monitor updates related to COVID-19 and will inform you of any changes to the Keeping Camps Safe – Student Guide in-person at Check-In/Check-Out and by email. If at anytime in-person classes are no longer deemed safe, Orlando Family Stage reserves the right to discontinue in-person class offerings.**